

Q4.00:2

2 of 17

67/14
c



SCHEDULE OF BUILDINGS					
NO. OF BLDGS. IN EACH BLOCK	BUILDING MARKED	TYPE	SIZE	SEE SHEETS NO.	REMARKS
BARRACK BLOCK BUILDINGS					
BLOCKS NO. 1-17 INC., 19, 20, 23 TO 29 INC., 31 TO 35 INC., 38 TO 42 INC. (36 BLOCKS)					
12	B	EVADEES APARTMENTS	20' x 120'	A-4 & A-5	
1	L	LAVATORIES & LAUNDRY	60' x 90'	A-8, A-9, & A-10	
1	M	MESS HALL & KITCHEN	40' x 100'	A-6 & A-7	
1	R	RECREATION BUILDING	20' x 100'	A-11	
MILITARY POLICE GROUP - BLOCK NO. 30					
1	1-AH	ADMINISTRATIVE HDQRS.	20' x 100'	A-21	
1	2-OQ	OFFICER QUARTERS	20' x 44'	A-23	
1	3-DMP	DISPENSARY	20' x 30'	A-25	
1	4-GMP	GARAGE (4 VEHICLES)	20' x 40'	A-30	
1	5-BMP, 6-BMP, 8-BMP, 9-BMP	BARRACK (ENLISTED MEN)	20' x 100'	A-24	
1	7-L	LAVATORY	20' x 40'	1:0. 700-8150 A 7:0. 700-8604	
1	10-GH	GUARD HOUSE	20' x 100'	A-25	
1	11-MMP	MESS & KITCHEN	20' x 100'	A-15	
1	12-PX	POST EXCHANGE	20' x 100'	A-22	
HOSPITAL GROUP - BLOCK NO. 47					
1	1-HA	ADMINISTRATION BLDG.	SEE PLAN	A-24	
1	2-DQ	DOCTOR QUARTERS	24' x 100'	A-35 & A-37	
1	3-NQ	NURSES QUARTERS	24' x 150'	A-36 & A-37	
1	4-OB	OBSTETRICAL WARD	24' x 150'-6"	A-38, A-39, & A-40	
1	5-C	CHILDREN'S WARD	24' x 150'-6"	A-40, A-41, & A-42	
3	6-SW, 7-SW, 8-SW	STANDARD WARD (ADULT)	24' x 150'-6"	A-43, A-44, & A-45	
1	9-1W	ISOLATION WARD	24' x 150'-6"	A-40, A-41, & A-42	
1	10-MD	MORGUE & DISINFECTING	20' x 120'	A-46	
2	11-HW & 12-HW	WAREHOUSES (HOSPITAL)	20' x 120'	A-46	
1	13-MH	MESS HALL	37' x 144'	A-51, A-52, A-53, & A-54	
1	14-SB	SURGERY BUILDING	24' x 170'	A-47 & A-48	
1	15-OP	OUTPATIENTS BUILDING	25' x 1160'	A-49 & A-50	
1	16-BH	BOILER HOUSE	40' x 72'	A-55, A-56, A-57, & A-58	
1	17-LH	LAUNDRY (HOSPITAL)	24' x 70'	A-59	
		COVERED WALKS	SEE PLANS	A-32 & A-55	
ADMINISTRATION GROUP - BLOCK NO. 48					
2	1-A & 2-A	ADMINISTRATION BLDG.	40' x 120'	A-12	
1	3-ST	STORE BUILDING	20' x 100'	A-17	
4	4-D, 5-D, 6-D, 7-D	DORMITORIES	20' x 100'	A-16 & A-19	
1	8-RA	RECREATION BUILDING	20' x 100'	A-11	
1	9-MA	MESS HALL & KITCHEN	20' x 100'	A-15	
1	10-S	SHOP	40' x 100'	A-14	
1	11-GA	GARAGE (8 VEHICLES)	20' x 80'	A-30	
1	12-WA	WAREHOUSE	20' x 100'	A-15	
ADMINISTRATION GROUP - BLOCK NO. 44					
1	1-PO	POST OFFICE	40' x 100'	A-20	
RECEIVING GROUP - BLOCK NO. 49					
1	1-RB	RECEIVING BUILDING	20' x 100'	A-16	
WAREHOUSE GROUP - BLOCK NO. 50					
20	W	WAREHOUSES	40' x 100'	A-14	
1	4-RW	REFRIGERATED WHSE.	40' x 100'	A-27, A-28, & A-29	
FIRE STATION GROUP - BLOCK NO. 22					
1	1-FS	FIRE STATION	SEE PLAN	A-26	
1	GR	GROUND RESERVOIR	" "	W-6, 1	
1	WPS	WATER PUMPING STATION	25' x 135' x 4'	W-7	
2	WH	WELL HOUSE	12' x 14'	A-30	
WATCH TOWERS					
8	WT	WATCH TOWER	6' x 6'	A-30	
1	GS	COAL STORAGE		R-36	

ROAD NOTES:
 INDICATIONS:
 12" GRAVEL ROAD.
 ROADS NOT IDENTIFIED TO BE 12" DIRT ROADS.

BUILDING SYMBOLS
 BLDG. NUMBER
 O, Q, R, S, T, U, V, W, X, Y, Z
 INDICATES BLDG. TYPE:
 BARRACK, OFFICE, STORE, GARAGE, WAREHOUSE, HOSPITAL, FIRE STATION, WATCH TOWER, COAL STORAGE, RECREATION, MESS HALL, KITCHEN, LAUNDRY, BOILER HOUSE, SURGERY, OUTPATIENTS, ISOLATION, MORGUE, CHILDREN'S, OBSTETRICAL, NURSES, DOCTOR, ADMINISTRATION, POST OFFICE, RECEIVING, WAREHOUSE, REFRIGERATED, FIRE STATION, WATER PUMPING, WELL HOUSE, COAL STORAGE.

W.R.A. Construction
 New
 Remains
 "AS BUILT" DRAWING

DATE	REVISION	REVIEWED BY	CHECKED BY	APPROVED BY

ROHWER RELOCATION CENTER
 DESHA COUNTY, ARKANSAS

LAYOUT PLAN

IN — SHEETS SHEET NO. **Fig 1** SCALE 1" = 200'

PREPARED FOR
 U. S. ENGINEER OFFICE, VICKSBURG, MISS.

BY
 NEIL SOMDAL AND NEIL
 ARCHITECT - ENGINEERS
 MCNEHEE, ARKANSAS &
 SHREVEPORT, LOUISIANA

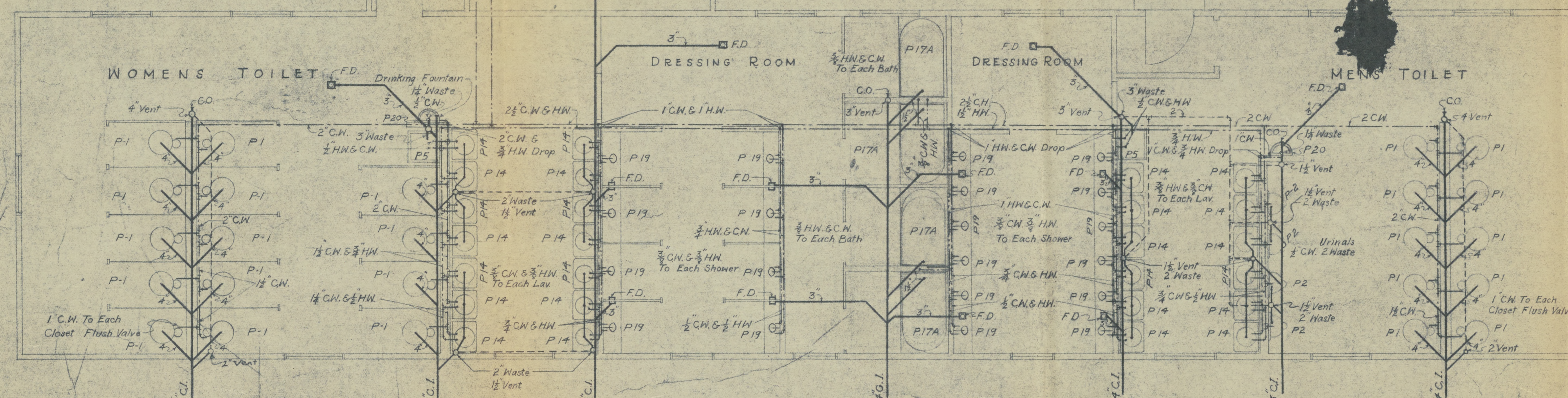
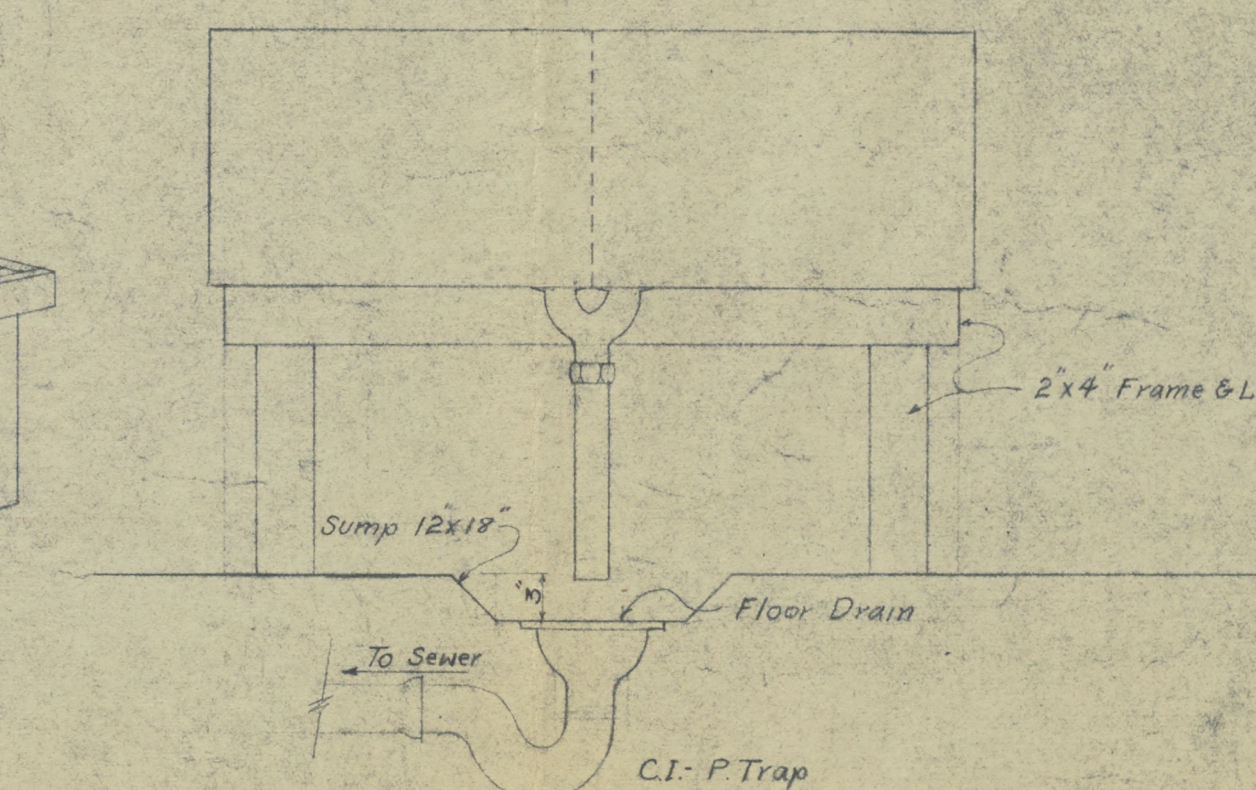
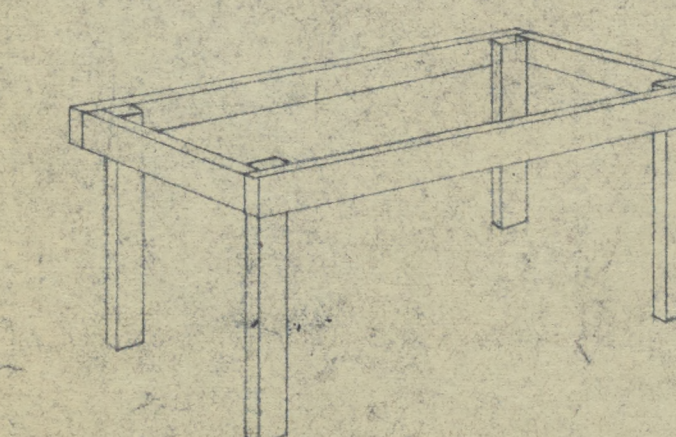
SUBMITTED
 A. C. Sherman
 ARCHITECT - ENGINEER

TO ACCOMPANY SPECIFICATIONS
 DATED...

APPROVED
 Arthur M. Rogers
 LIEUTENANT COLONEL
 U. S. ARMY

DEC. 31, 1942

N.S.N. L-1 DRAWING NO. L-1



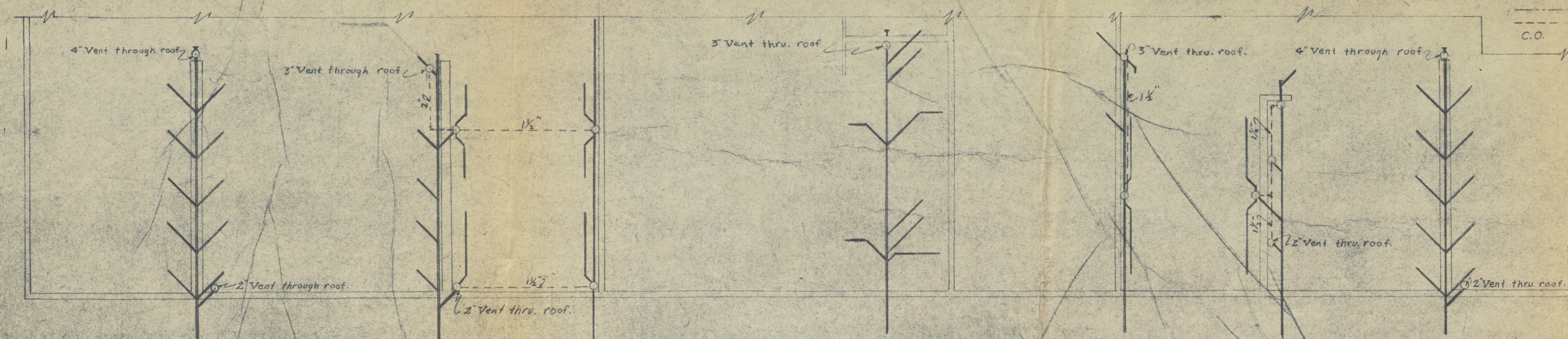
NOTE:
Hot Water Storage Tank 1320 Gallon Capacity
Hot Water Heater Coal Fired 700 Gallon 100° F Rise

PLUMBING FIXTURE SCHEDULE

P1 - Closets
P2 - Urinals
P5 - Service Sink
P14 - Lavatories
P17A - Bath Tub
P18 - Laundry Trays
P19 - Showers
P20 - Drinking Fountain
F.D. - Floor Drain

LEGEND

———— Soil or Waste Pipe
- - - - Cold Water
- - - - Hot Water
- - - - Vent on Ceiling
60 Glass Out



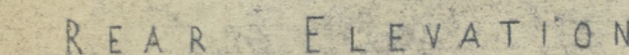
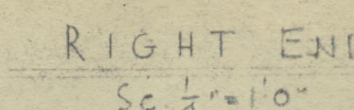
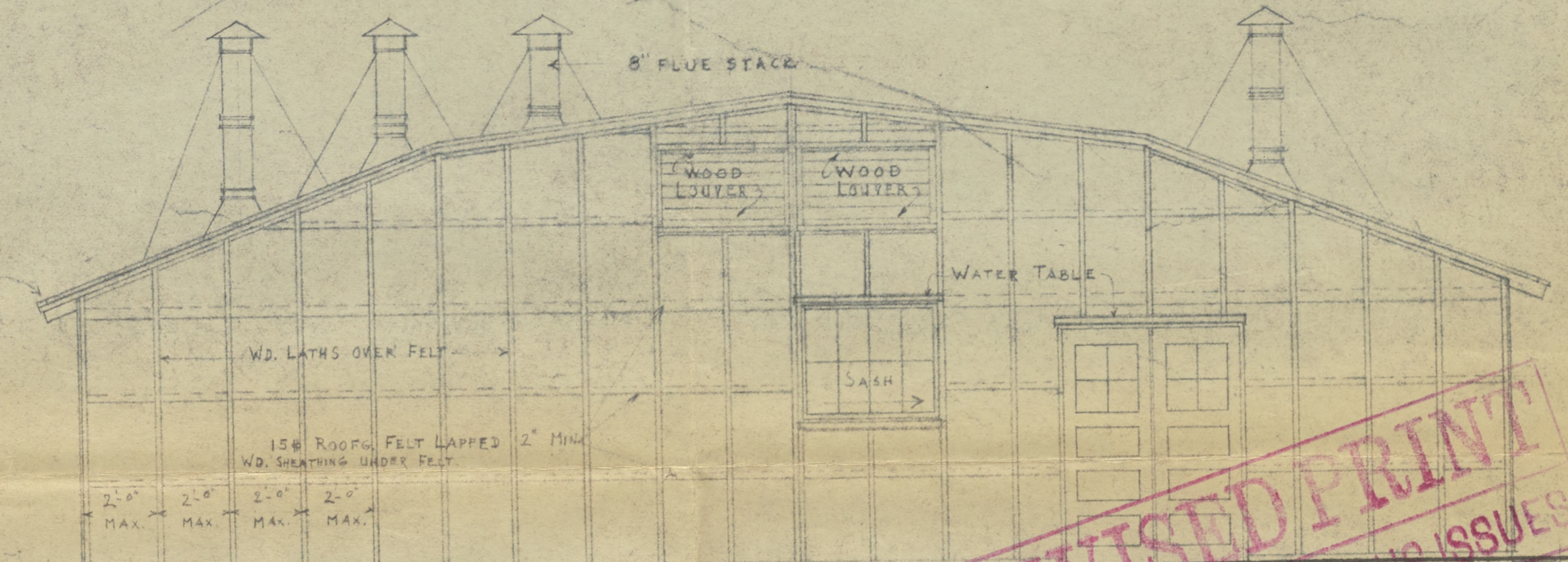
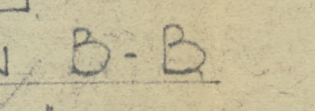
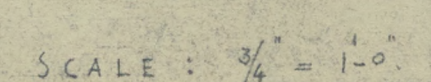
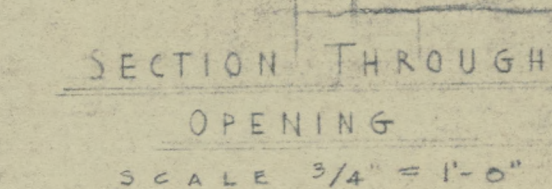
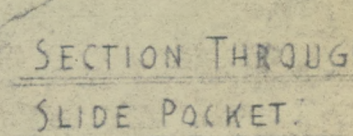
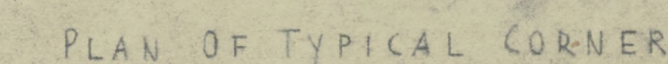
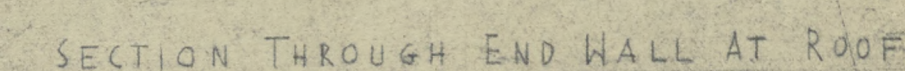
• ALTERNATE METHOD OF RE-VENTING • SC. $\frac{1}{4}$ " = 1'0"

JULY 8 AM
DESTROY ALL PREVIOUS EDITIONS

DATE	REVISION	DESIGNED BY	CHECKED BY	APPROVED
	ROHWER DESHA	RELOCATION CENTER COUNTY, ARKANSAS EVAQUEES LAVATORY & LAUNDRY Fig. 2		
IN ____ SHEETS	SHEET NO.	SCALE AS SHOWN		
PREPARED FOR U. S. ENGINEER OFFICE, VICKSBURG, MISS. BY NELD, SOMDAL AND NEILD ARCHITECT - ENGINEERS MCGHEE, ARKANSAS & SHREVEPORT, LOUISIANA				
SUBMITTED		FILE NO.		APPROVED
<i>D.A. Somdal</i> <small>ENGINEER - CIVIL</small>		<small>TO ACCOMPANY SPECIFICATIONS</small> <small>DATED _____</small>		 <small>REGISTERED PROFESSIONAL ARCHITECT</small>

NSN-A-10

DRAWING № A-10



DATE	REVISION	REVISED BY	CHECKED BY	APPROVED BY
------	----------	------------	------------	-------------

ROHWER
DESHA RELOCATION CENTER
COUNTY, ARKANSAS
EVAQUEES MESS HALL & KITCHEN

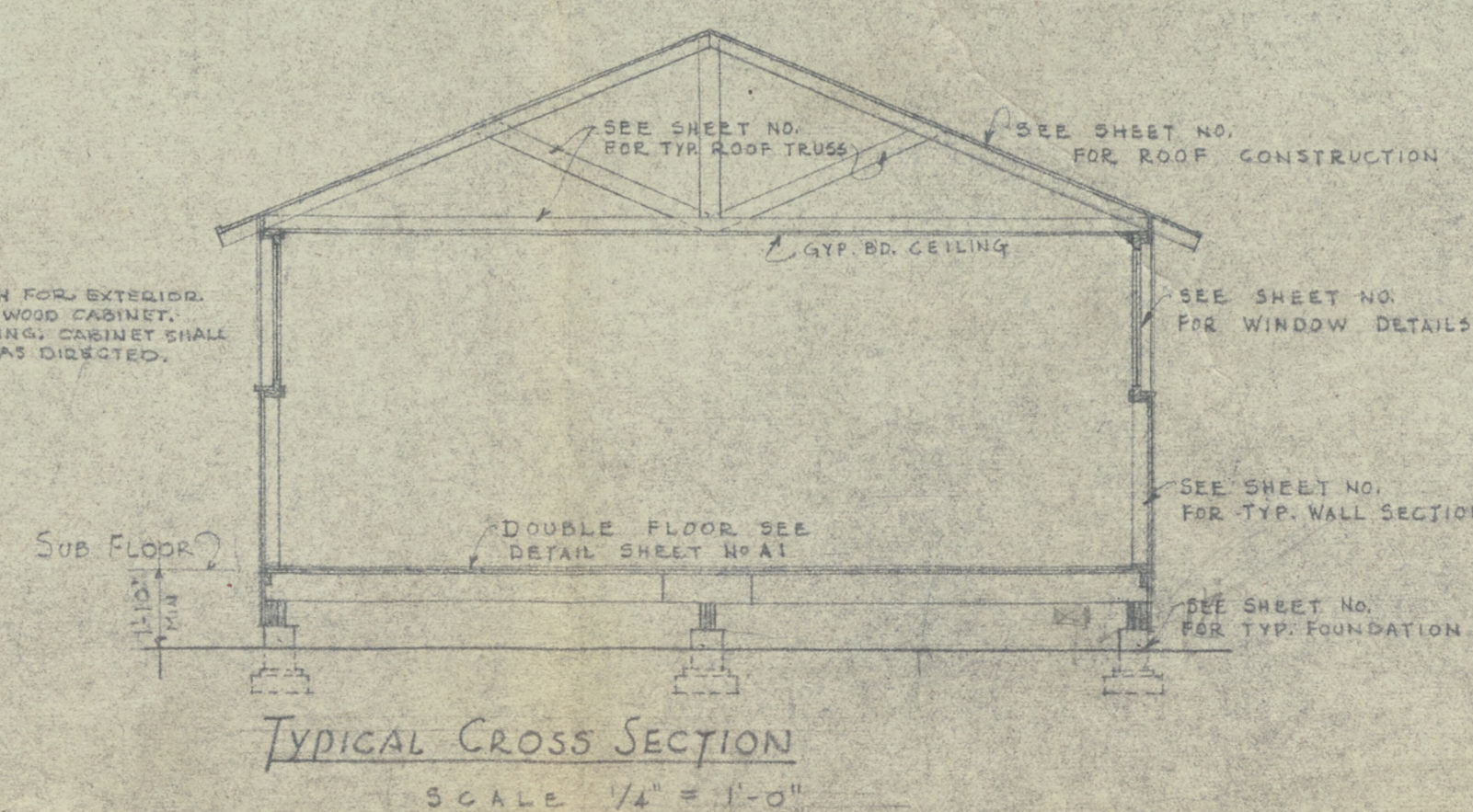
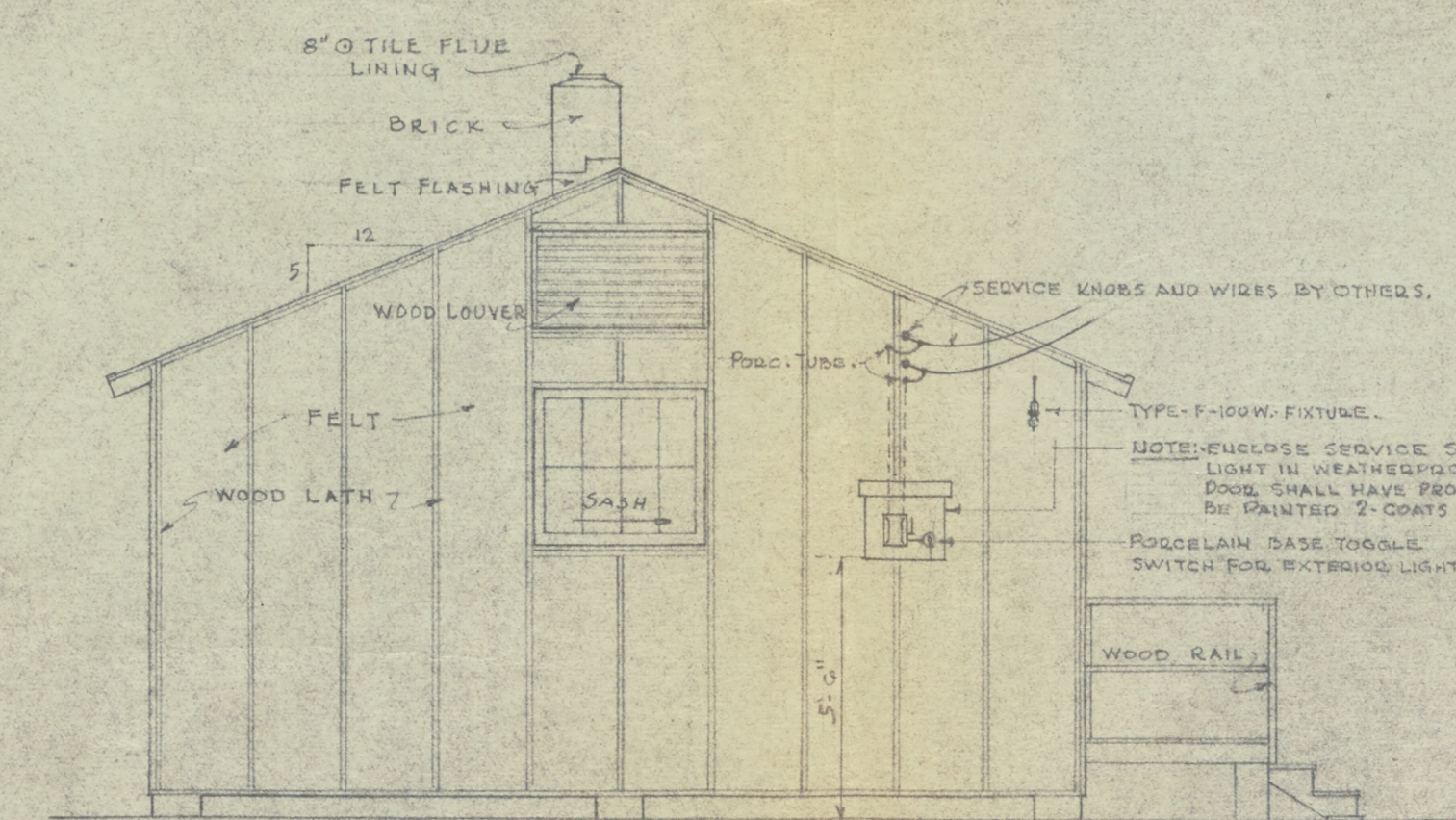
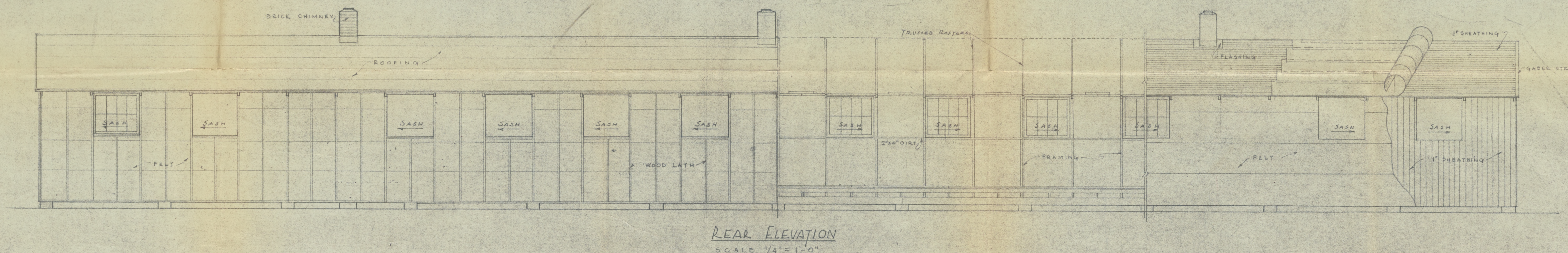
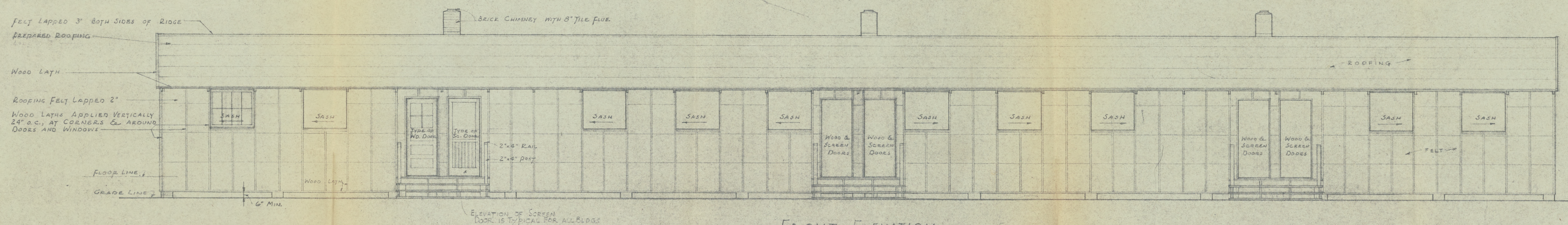
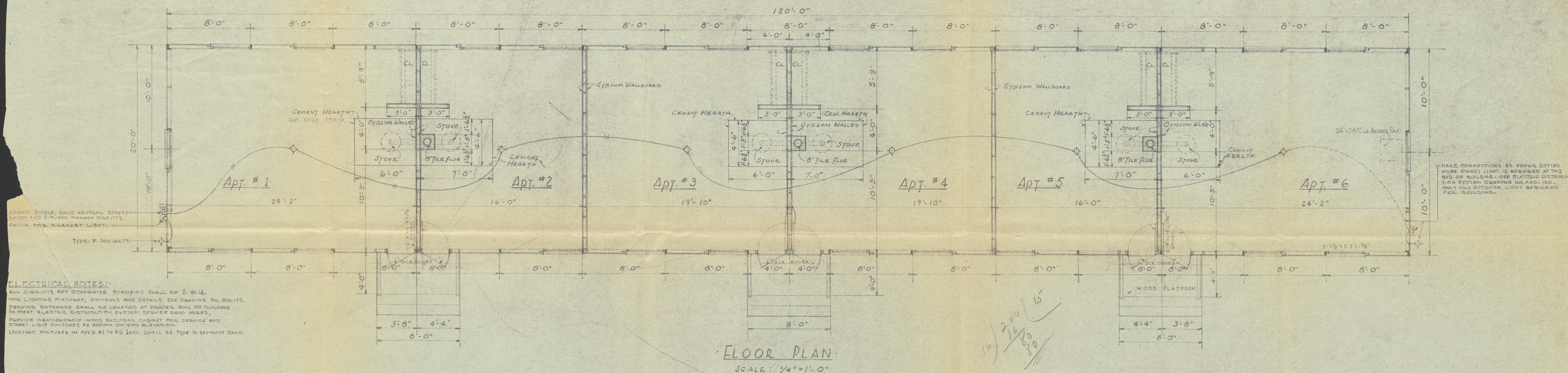
Fig.-3

IN — SHEETS SHEET NO. SCALE AS SHOWN
PREPARED FOR
U. S. ENGINEER OFFICE, VICKSBURG, MISS. JULY 13, 19

<p align="center">BY</p> <p align="center">NEILD, SOMDAL AND NEILD</p> <p align="center">ARCHITECT - ENGINEERS</p> <p align="center">MCGEEHEE, ARKANSAS &</p> <p align="center">SHREVEPORT, LOUISIANA</p>		
<p>SUBMITTED</p> <p><i>D. H. Neild</i></p> <p>ARCHITECT - ENGINEER</p>	<p>FILE NO.</p> <p>TO ACCOMPANY SPECIFICATIONS</p> <p>DATED <i>10-1-54</i> BY <i>W. H. Neild</i></p>	<p>APPROVED</p> <p><i>W. H. Neild</i></p> <p>LIEUTENANT COLONEL</p> <p>CORPS OF ENGINEERS</p>

NSN - A-7

DRAWING No A-

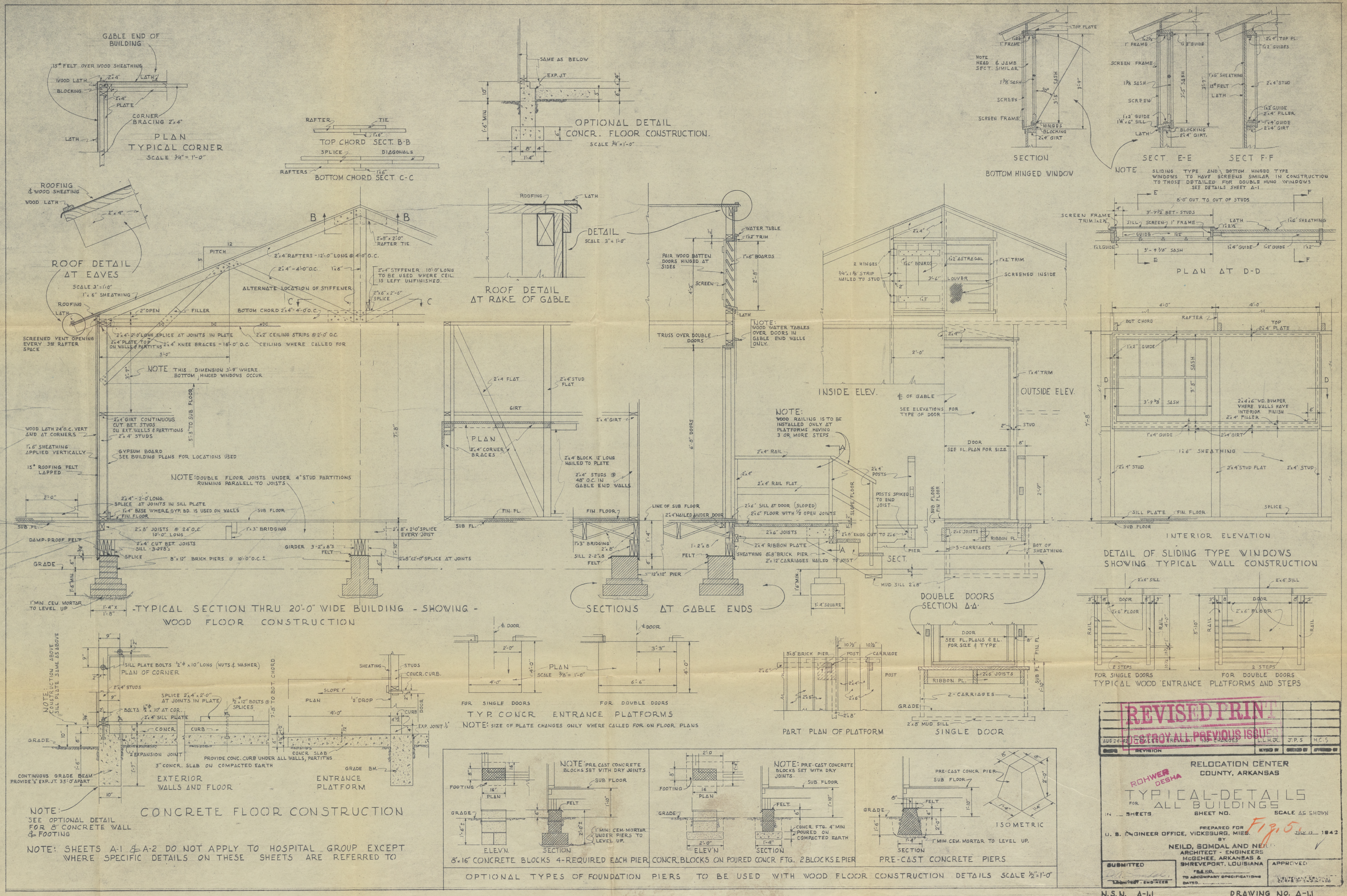


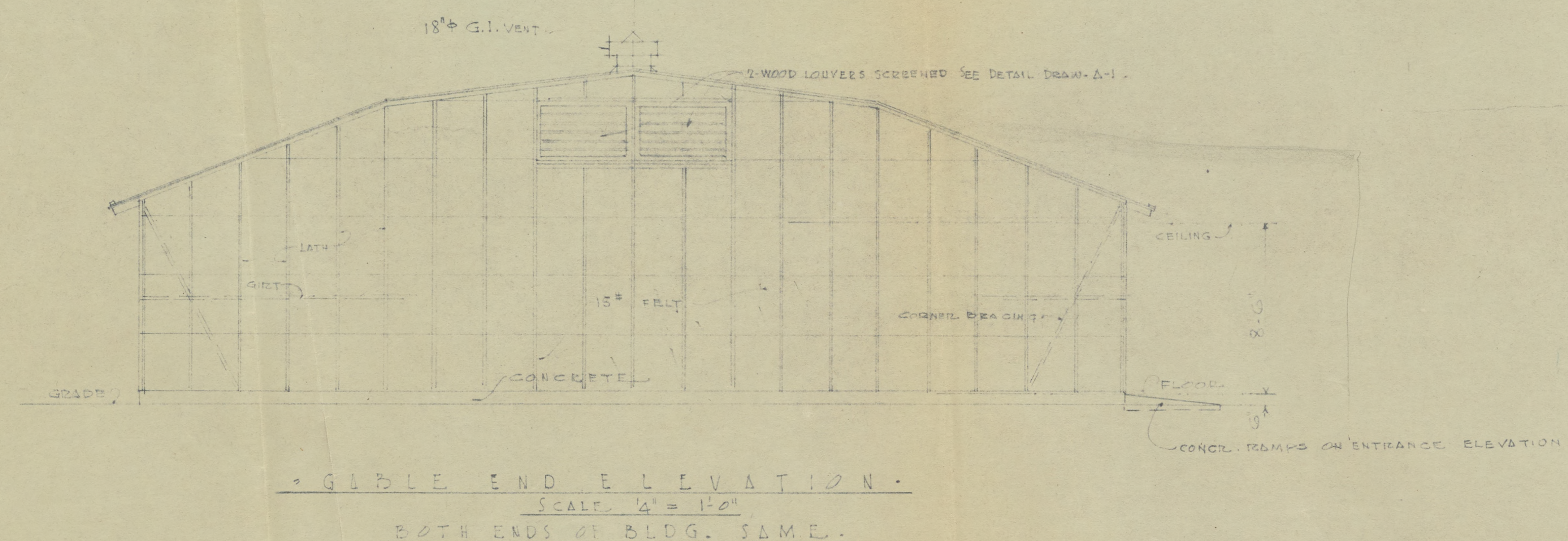
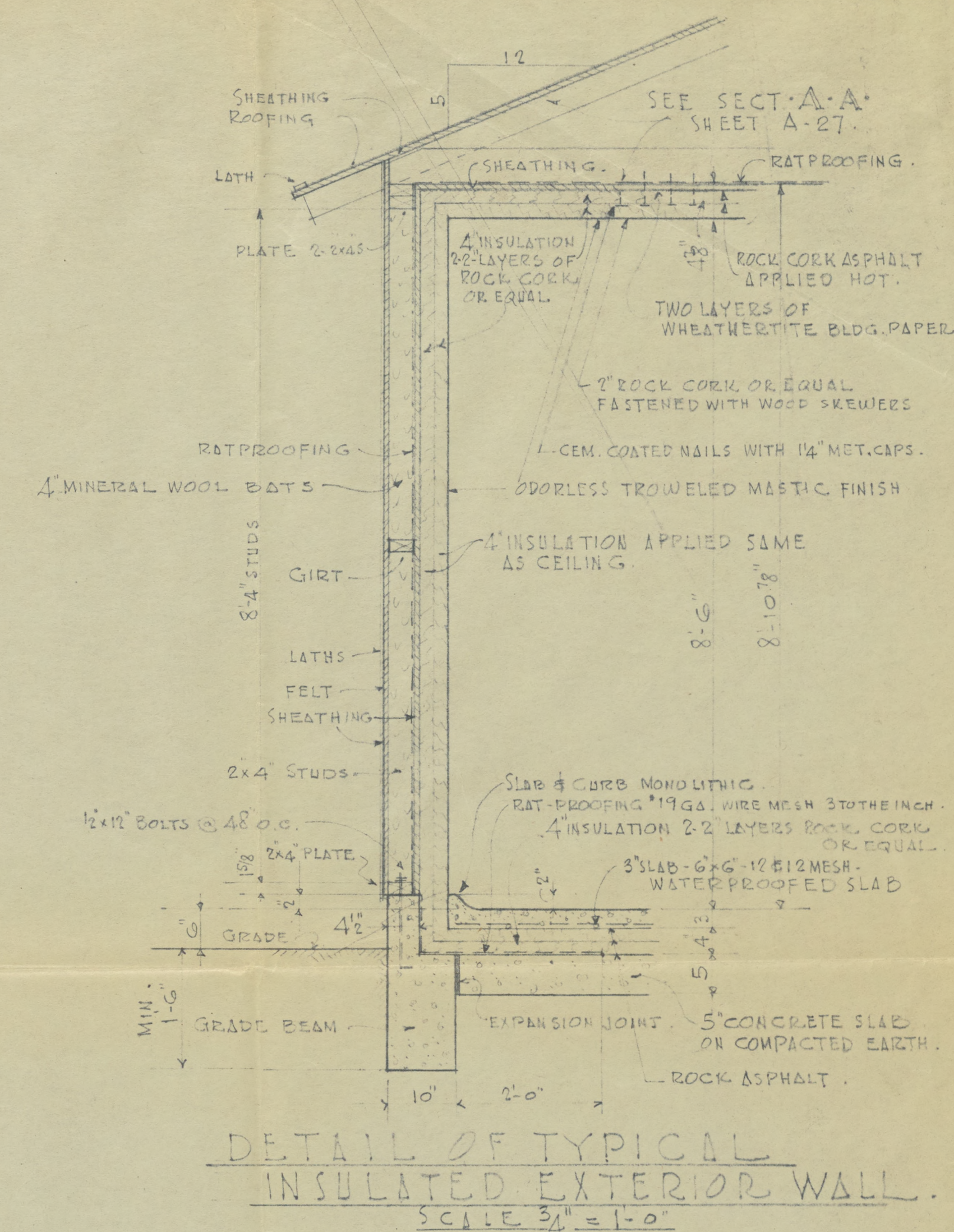
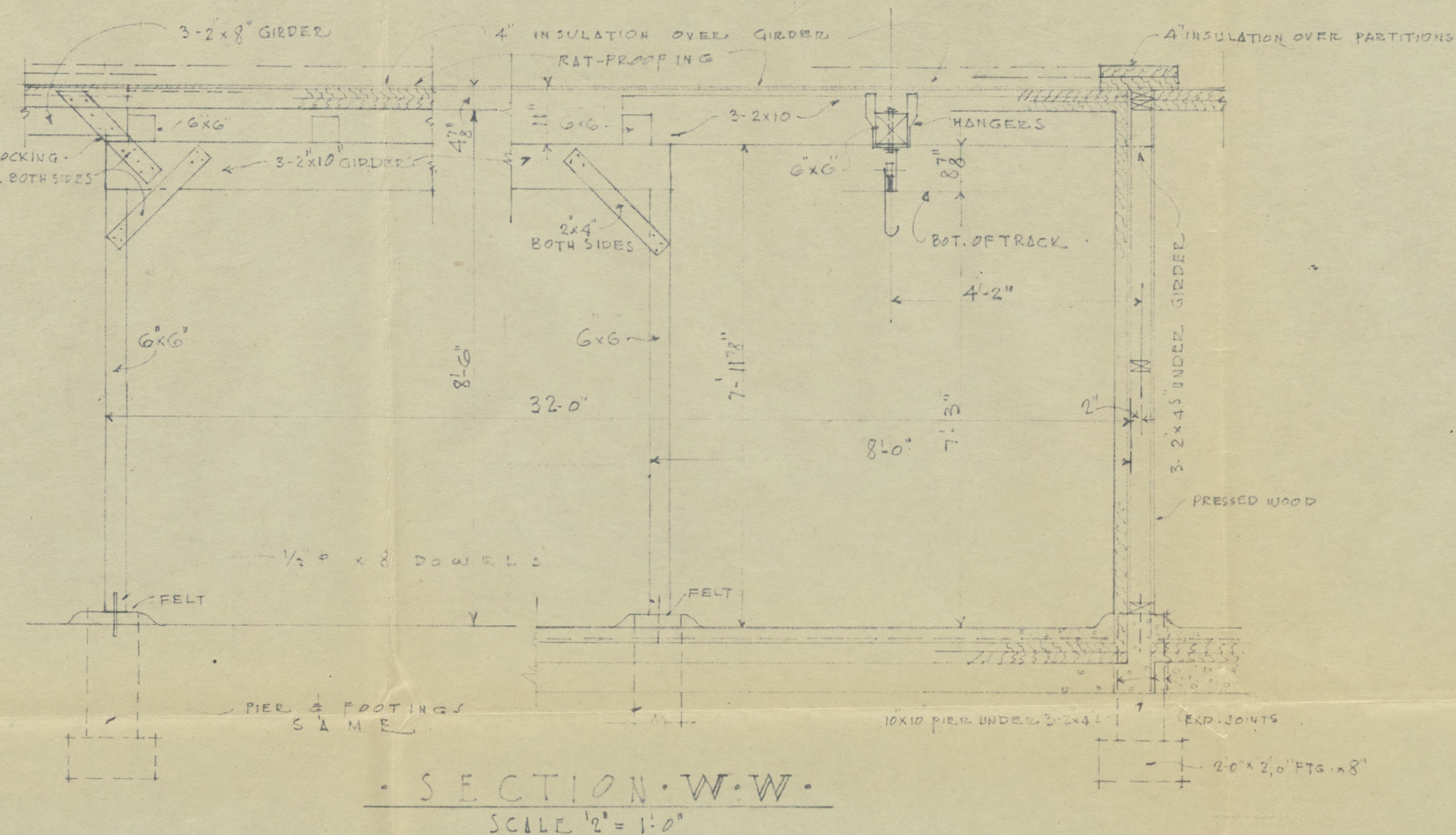
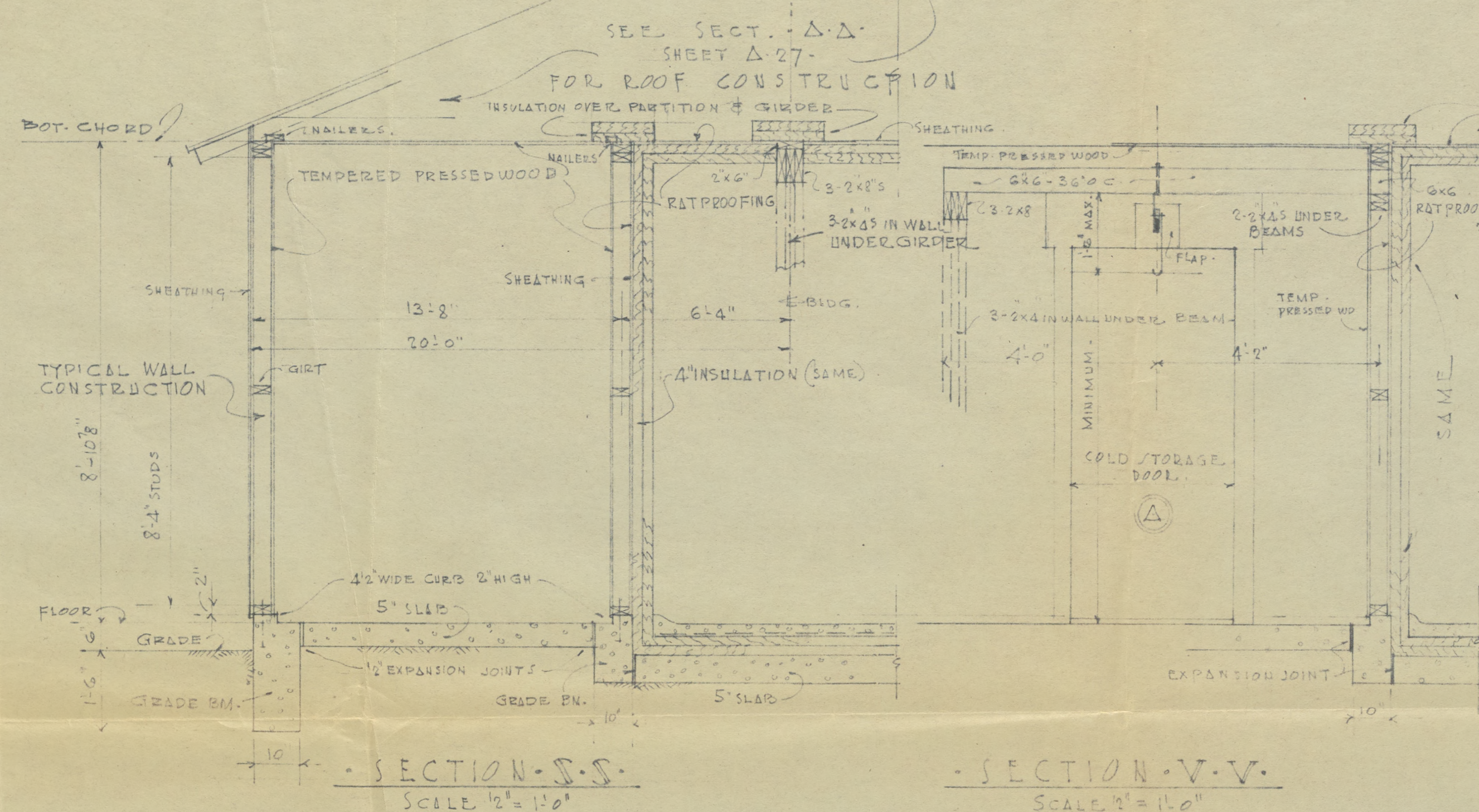
GENERAL NOTES

FOR FOUNDATION - SEE SHEET NO. A-1 & A-5
WALL SECTION " " A-1 & A-5
WINDOW DETAILS " " A-1 & A-5
ROOF TRUSS " " A-1
GYPSUM BOARD CEILING - SEE SHEET NO.
CEMENT HEARTH & CHIMNEY - SEE
WOOD LOUVERS - SEE SHEET NO. A-1
ALL WINDOWS SHALL BE 3'-9 1/2" x 2'-5" x 1 1/4" WOOD
8 LIGHT SLIDING SASH. SEE SHEET NO. A-1 & A-5
ALL DOORS SHALL BE 2'-8 1/2" x 1'-1 1/2" WOOD-
STOCK DOORS - 4 LIGHT - SEE SHEET NO.
SCREEN ALL DOOR & WINDOW OPENINGS
FOR ALL CEILINGS PROVIDE 2" x 2" STRIPPING
2'-0" O.C. OVER WHICH GYPSUM BOARD SHALL
BE PLACED.
SEE SHEETS NOS. A-1, A-2 & A-3 FOR TYPICAL DETAILS.
IN LIEU OF 8" DIA. FLUE LINING THE CONTRACTOR
HAS THE OPTION OF USING SQUARE FLUE LINING OF
EQUIVALENT AREA.

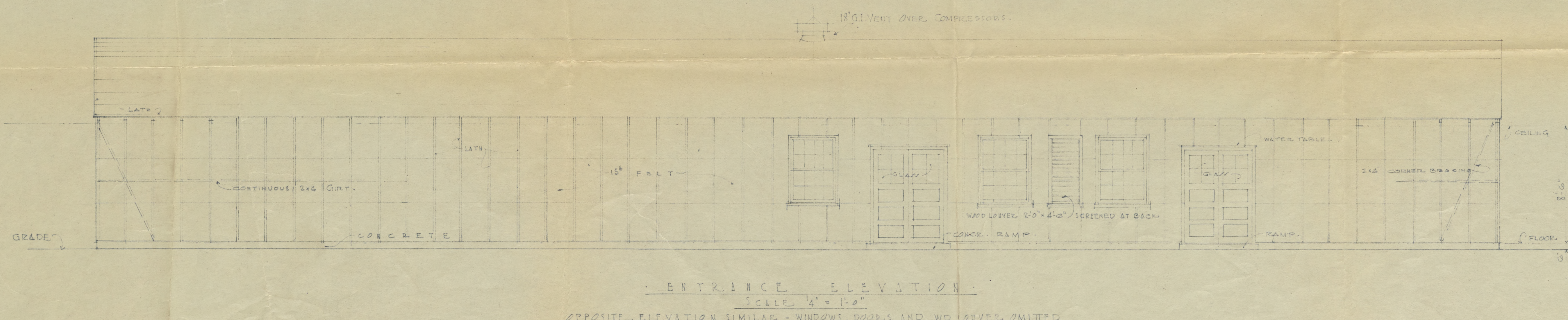
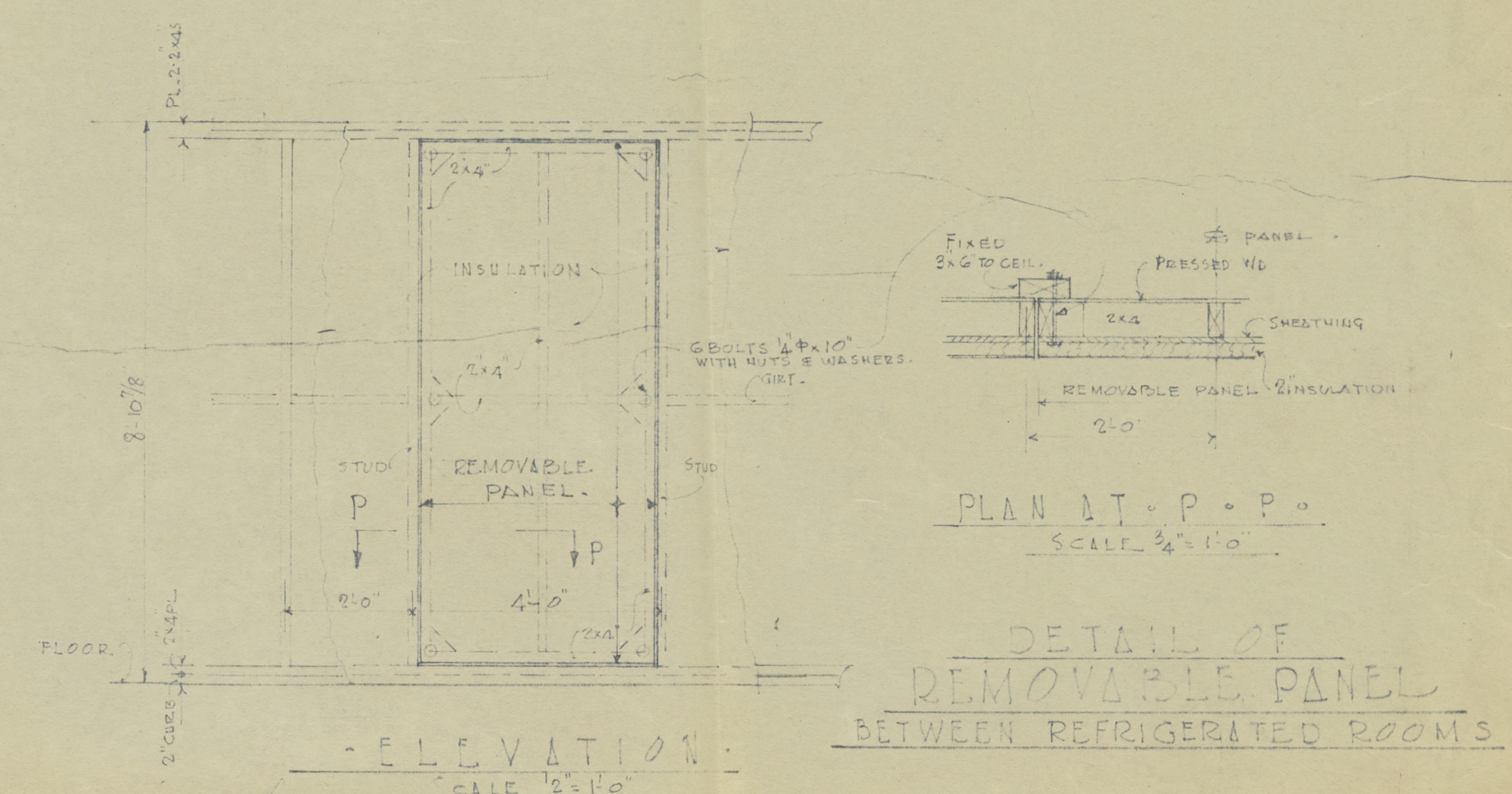
Advance Issue
FINAL APPROVAL PENDING

DATE	REVISION	BY	CHKD BY	APPROVED BY
<p>ROHVER RELOCATION CENTER DESHA COUNTY, ARKANSAS EVACUEES BARRACKS BUILDING Fig. 4</p>				
IN SHEETS		SHEET NO.		SCALE 1" = 1'-0"
<p>PREPARED FOR U. S. ENGINEER OFFICE, VICKSBURG, MISS. BY NEILD, SOMDAL AND NEILD ARCHITECT - ENGINEERS MCBEHEE, ARKANSAS & SHREVEPORT, LOUISIANA</p>				
SUBMITTED		TO ACCOMPANY SPECIFICATIONS		APPROVED
ARCHITECT - ENGINEER		DATE		DATE



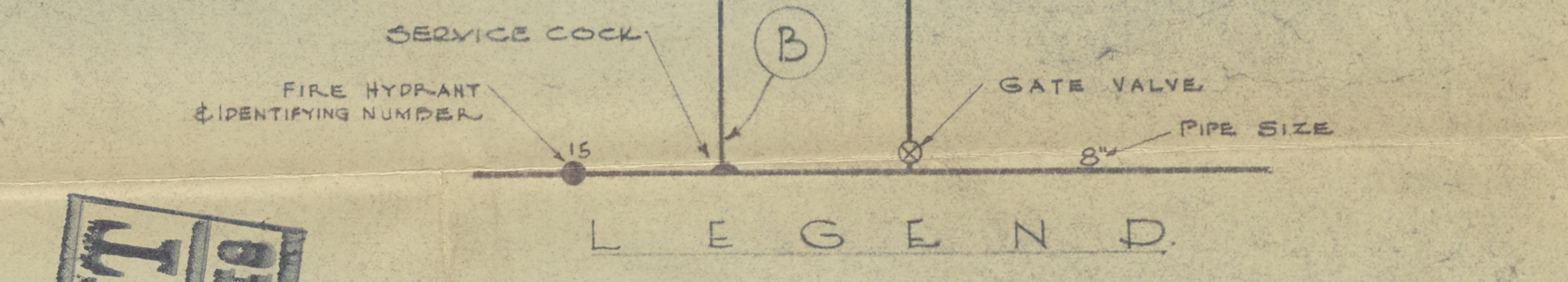
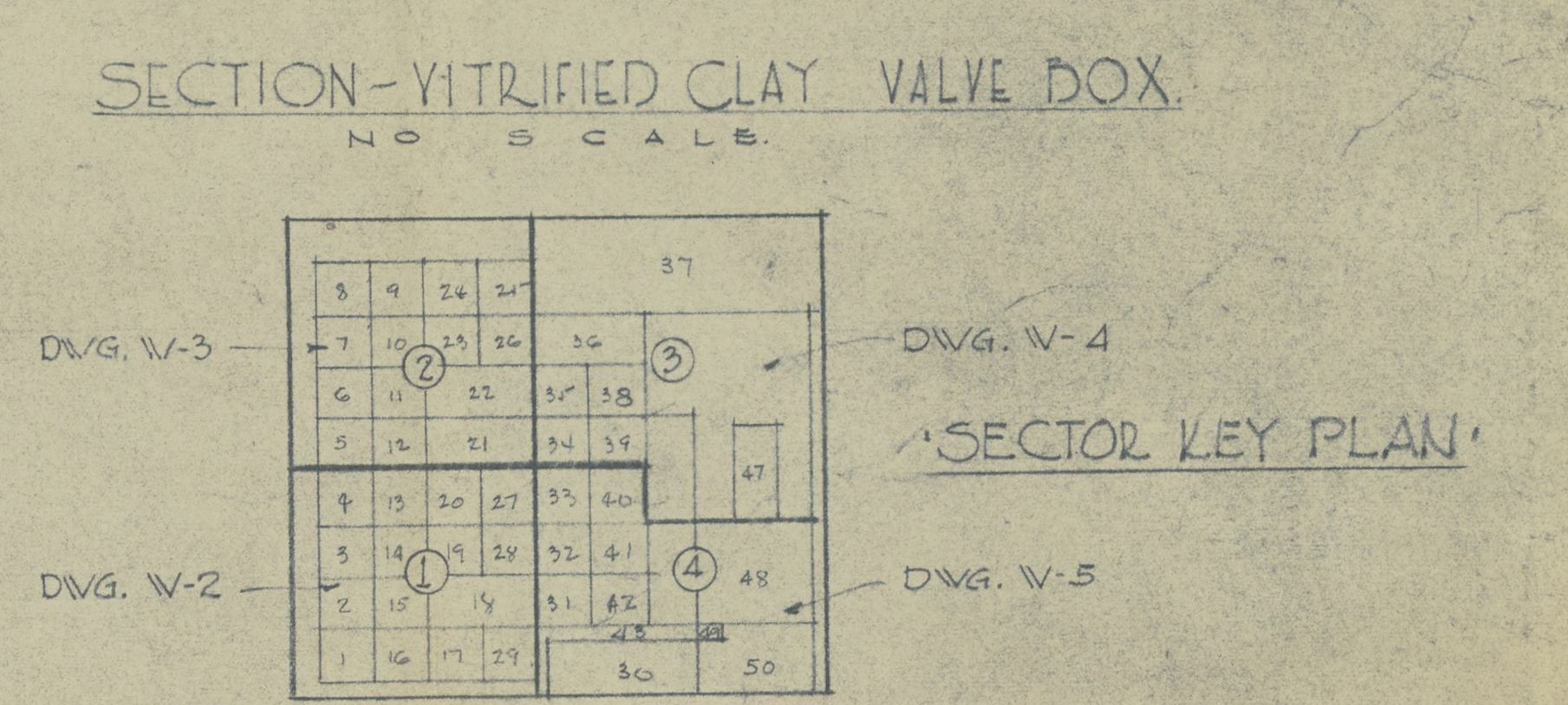
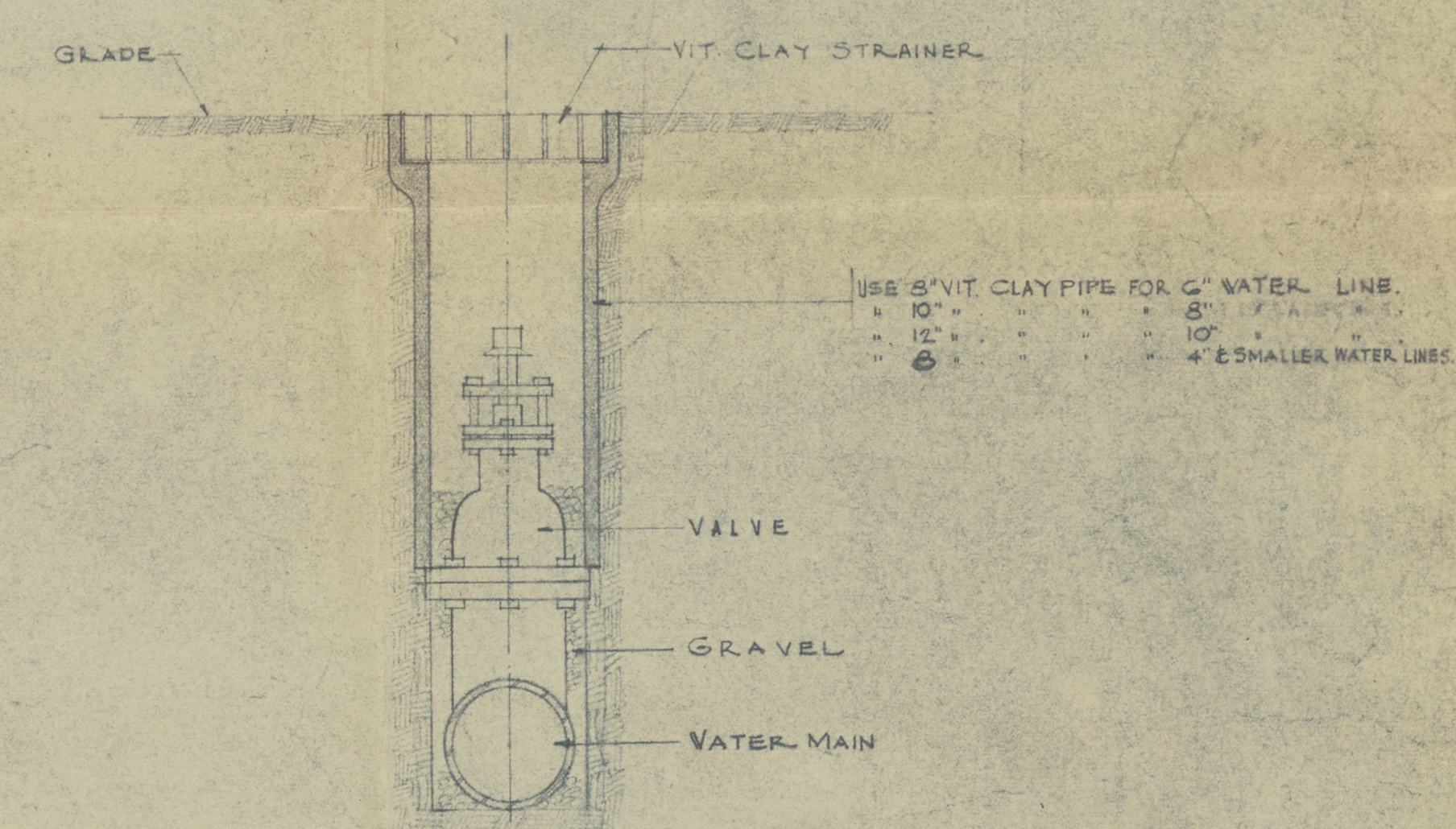
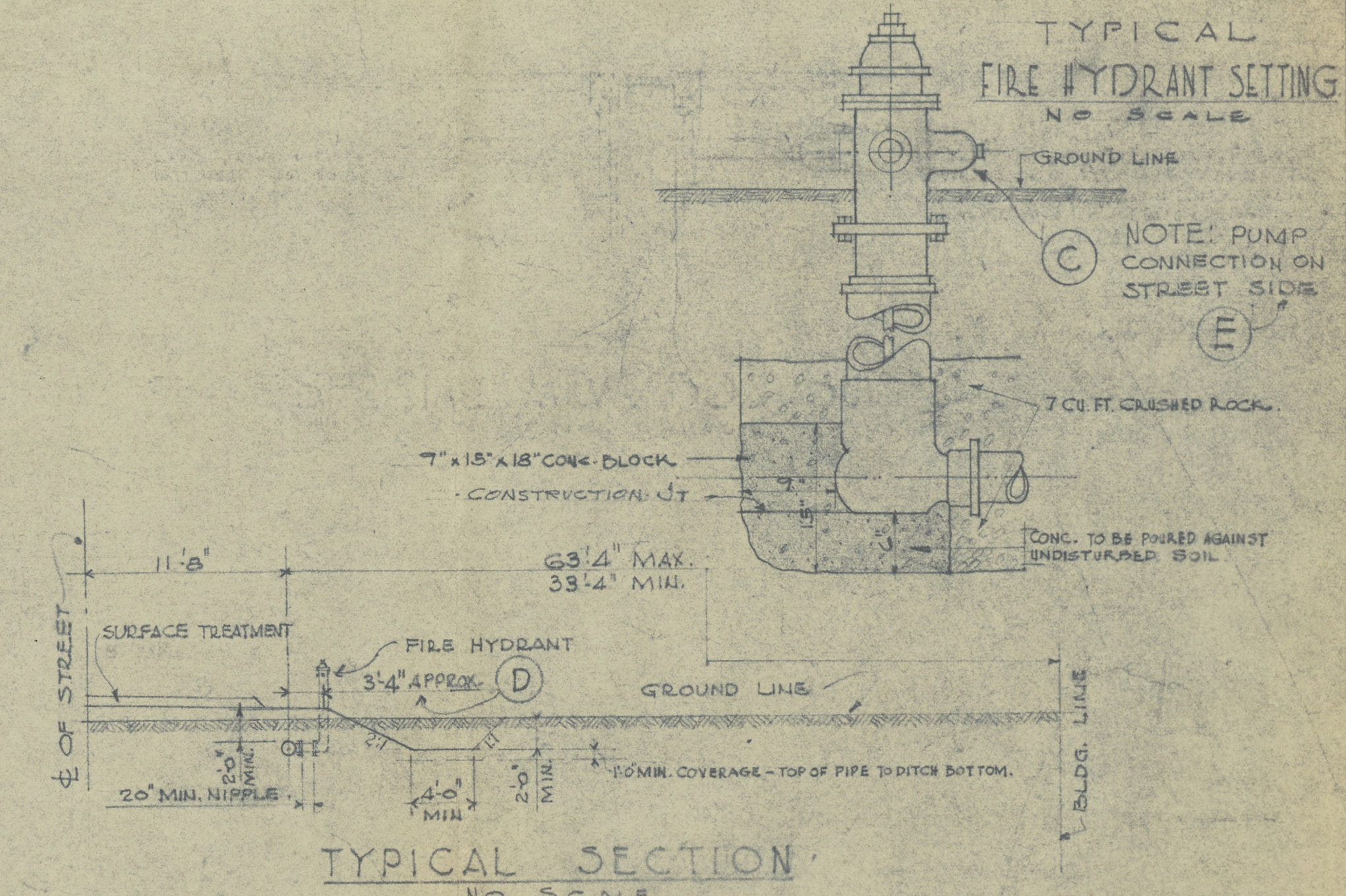
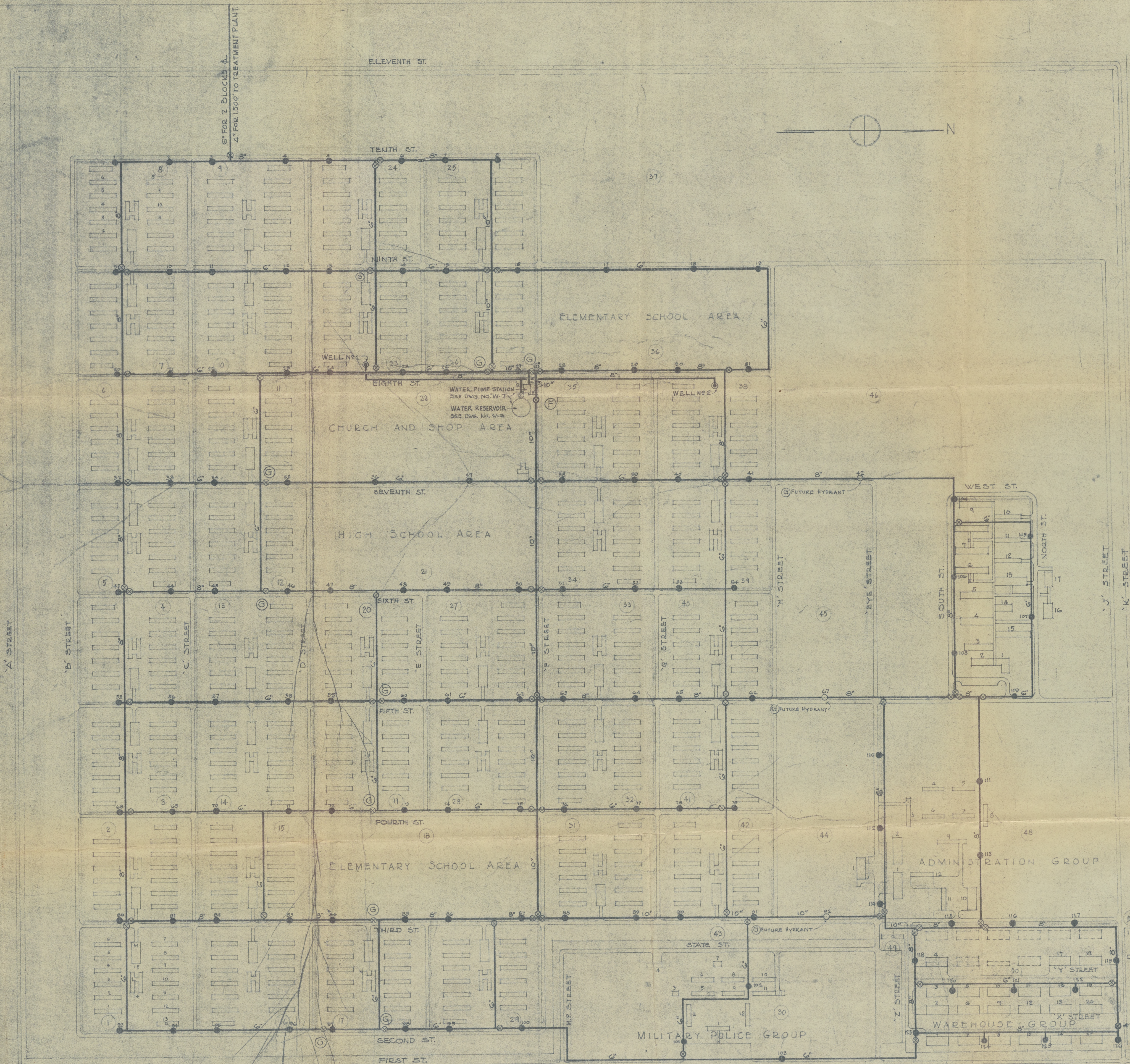


REFRIGERATOR DOOR-SCHEDULE				
SYMBOL	TYPE	SIZE	INSULATION THICKNESS	NUMBER REQUIRED
(A)	COLD STORAGE DOOR-TRUCK TYPE WITH SELF CLOSING BATTEN DOORS.	2'-0" x 7'-0"	4"	1 RIGHT
(B)	COLD STORAGE DOOR WITH SELF CLOSING BATTEN DOORS.	2'-0" x 6'-6"	4"	2 RIGHT



REVISED PRINT
DESTROY ALL PREVIOUS ISSUES

DATE	REVISION	REVISED BY	APPROVED BY
<p>RELOCATION CENTER COUNTY, ARKANSAS REFRIGERATED WAREHOUSE.</p> <p>Fig. 6</p>			
IN SHEETS	SHEET NO.	SCALE AS NOTED	
<p>PREPARED FOR U. S. ENGINEER OFFICE, VICKSBURG, MISS. July 20, 1942</p> <p>BY NEILD, SOMDAL AND NEILD ARCHITECT - ENGINEERS MCGEHEE, ARKANSAS & SHREVEPORT, LOUISIANA</p>			
SUBMITTED	FILED	APPROVED	
TO ACCOMPANY SPECIFICATIONS	DATED	REVISION	



REVISED PRINT
DESTROY ALL PREVIOUS EDITIONS

I	CHANGED APP. 30" 8" 10" Ings 6-4-42	L.C.P.	L.D.
H	6" TO 8" SARGE PLANT LOC. CHANGED	7-28-42	R.D.
G	Hydrant Valves Relocated & Added 2nd Hydrant Marked Future	7-28-42	W.B.S.
F	Charged piping added note	7-21-42	W.B.S.
E	Note added	7-21-42	H.H.D.
D	Dimension added	7-18-42	W.B.S.
C	Fire Hydrant reversed	7-18-42	W.B.S.
B	Service Cock sym. added	7-18-42	W.B.S.
A	Valve relocated.	7-18-42	W.B.S.
NO.	REVISION	DATE	BY APPROVED

ROHWER RELOCATION CENTER
DESHA COUNTY, ARKANSAS

**WATER DISTRIBUTION SYSTEM
GENERAL LAYOUT**

IN 1 SHEETS SHEET NO. 1 SCALE 1\"/>

U.S. ENGINEER OFFICE
NEILD, SOMDAL AND NEILD
ARCHITECT - ENGINEERS
M'GHEE, ARKANSAS.
SHREVEPORT, LOUISIANA.

FILE NO. TO ACCOMPANY SPECIFICATIONS DATED JULY 8, 1942

APPROVED: COLONEL CORPS OF ENGINEERS

DRAWING NO. W-1

14720